

# Castlestone

Con Castlestone il fascino della pietra è ora al servizio dell'arredamento architettonico.

Thanks to Castlestone, the appeal of stone is now at the service of architectural design.

Mit Castlestone steht der Zauber des Natursteins heute im Dienst der architektonischen Raumgestaltung.

Avec Castlestone, le charme de la pierre est maintenant au service de l'architecture d'intérieur.

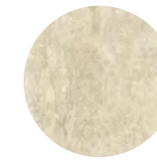
5

Colori  
Colours  
Farben  
Couleurs

White



Almond



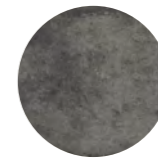
Grey



Musk



Black



3

Formati  
Sizes  
Formate  
Formats

60×60  
24"×24"



45×90  
18"×36"



30×60  
12"×24"



3

Superfici  
Surfaces  
Oberflächen  
Surfaces

Naturale

Lappato

Antislip

1

Strutture 3D  
3D structures  
Strukturen  
Decorations and relief

Muretto



i

Effetto Pietra  
Stone Look  
Natursteinoptik  
Effet Pierre

Rivestimento  
Wall Tiles  
Wandfliesen  
Revêtement

Pavimento  
Floor Tiles  
Bodenfliesen  
Sol

Gres fine porcellanato ad impasto colorato  
Coloured-body fine porcelain stoneware  
Feinsteinzeug aus farbiger Masse  
Grès cérame fin à pâte colorée

Tecnologia digitale  
Digital technology  
Digital Technologie  
Technologie numérique



## White



60x60  
**00126A** | Castlestone White Nat/Ret  
**00131A** | Castlestone White Lap/Ret



60x60  
**00456A** | Castlestone Antislip White Ret



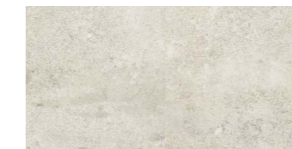
30x60  
**00224A** | Castlestone Mix Cold Ret



30x60  
**00149A** | Castlestone Muretto White Ret



45x90  
**03877** | Castlestone White Nat/Ret



30x60  
**00136A** | Castlestone White Nat/Ret



30x60  
**\*00282** | Castlestone Inciso White Ret



30x30  
**00159** | Castlestone Mosaico White Ret

## Almond



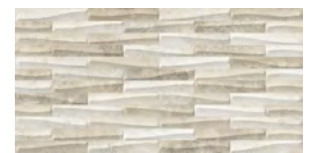
60x60  
**00127A** | Castlestone Almond Nat/Ret  
**00132A** | Castlestone Almond Lap/Ret



60x60  
**00457A** | Castlestone Antislip Almond Ret



30x60  
**00225A** | Castlestone Mix Warm Ret



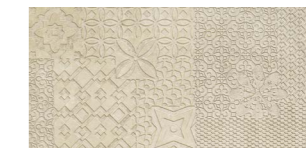
30x60  
**00150A** | Castlestone Muretto Almond Ret



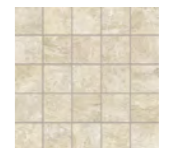
45x90  
**03704** | Castlestone Almond Nat/Ret



30x60  
**00137A** | Castlestone Almond Nat/Ret



30x60  
**\*00283** | Castlestone Inciso Almond Ret



30x30  
**00160** | Castlestone Mosaico Almond Ret

\* Decori realizzati con smalti e metalli preziosi. Vedere nota a pag. 366-367  
Decors made with glazes and precious metals. See note on pages 366-367  
Dekore aus Glasuren und Edelmetallen. Siehe Hinweis auf Seiten 366-367  
Décors réalisés avec des émaux et des métaux précieux. Voir note aux pages 366-367





## Grey



60x60  
**00128A** | Castlestone Grey Nat/Ret  
**00133A** | Castlestone Grey Lap/Ret



60x60  
**00458A** | Castlestone Antislip Grey Ret



30x60  
**00224A** | Castlestone Mix Cold Ret



30x60  
**00151A** | Castlestone Muretto Grey Ret



45x90  
**03706** | Castlestone Grey Nat/Ret



30x60  
**00138A** | Castlestone Grey Nat/Ret



30x60  
**\*00284** | Castlestone Inciso Grey Ret



30x30  
**00161** | Castlestone Mosaico Grey Ret



## Musk



60x60  
**00129A** | Castlestone Musk Nat/Ret  
**00134A** | Castlestone Musk Lap/Ret



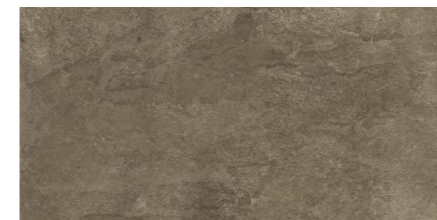
60x60  
**00459A** | Castlestone Antislip Musk Ret



30x60  
**00225A** | Castlestone Mix Warm Ret



30x60  
**00152A** | Castlestone Muretto Musk Ret



45x90  
**03707** | Castlestone Musk Nat/Ret



30x60  
**00139A** | Castlestone Musk Nat/Ret



30x60  
**\*00285** | Castlestone Inciso Musk Lap/Ret



30x30  
**00162** | Castlestone Mosaico Musk Ret

\* Decori realizzati con smalti e metalli preziosi. Vedere nota a pag. 366-367  
Decors made with glazes and precious metals. See note on pages 366-367  
Dekore aus Glasuren und Edelmetallen. Siehe Hinweis auf Seiten 366-367  
Décors réalisés avec des émaux et des métaux précieux. Voir note aux pages 366-367

## Black



60x60  
**00130A** | Castlestone Black Nat/Ret  
**00135A** | Castlestone Black Lap/Ret



60x60  
**00460A** | Castlestone Antislip Black Ret



30x60  
**00224A** | Castlestone Mix Cold Ret



30x60  
**00153A** | Castlestone Muretto Black Ret



45x90  
**03881** | Castlestone Black Nat/Ret



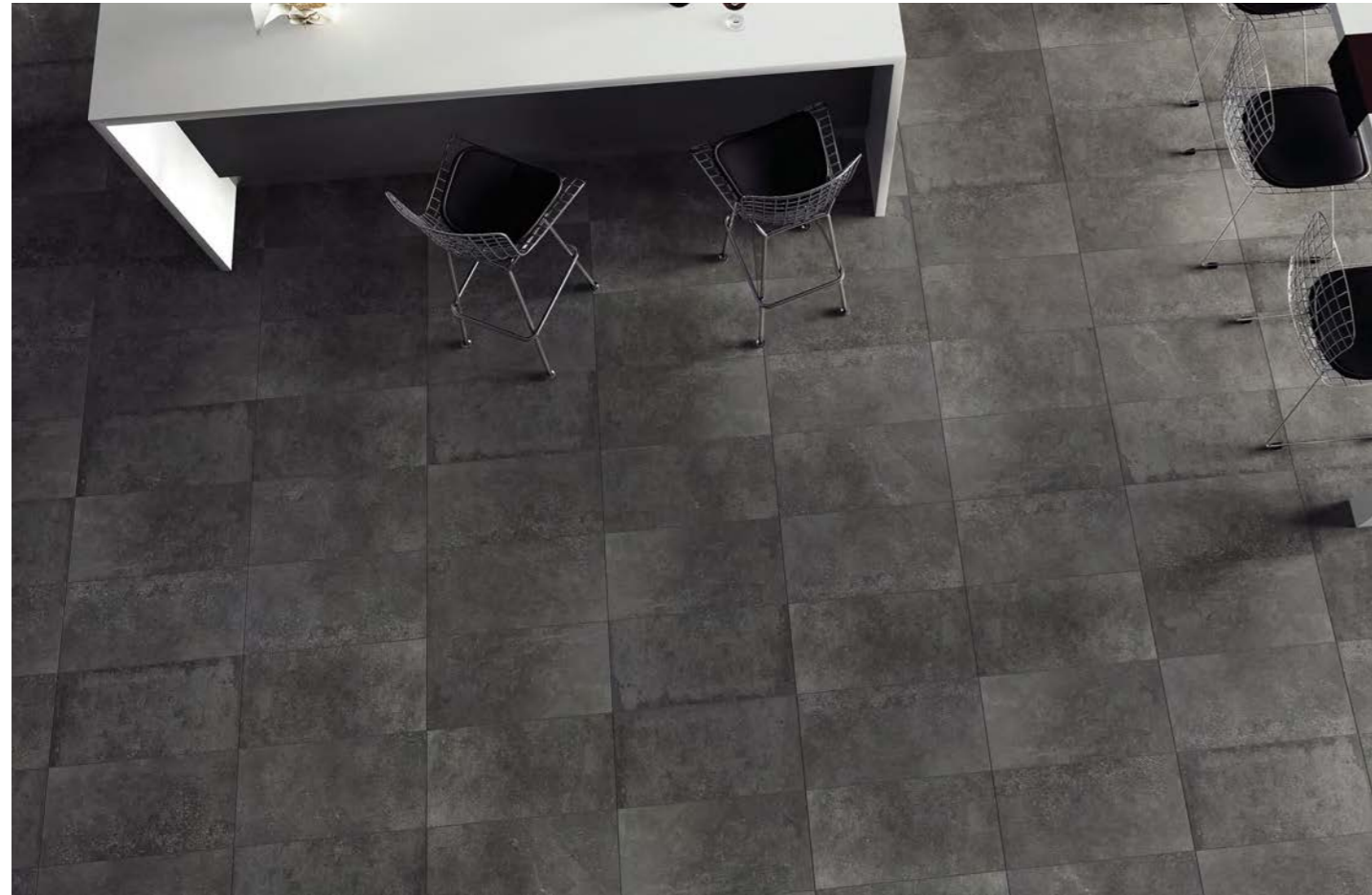
30x60  
**00141A** | Castlestone Black Nat/Ret



30x60  
**\*00286** | Castlestone Inciso Black Lap/Ret **00163** | Castlestone Mosaico Black Ret



\* Decori realizzati con smalti e metalli preziosi. Vedere nota a pag. 366-367  
Decors made with glazes and precious metals. See note on pages 366-367  
Dekore aus Glasuren und Edelmetallen. Siehe Hinweis auf Seiten 366-367  
Décors réalisés avec des émaux et des métaux précieux. Voir note aux pages 366-367



## Imballi

Packing  
Verpackung  
Emballage

Formato / Size		± MM	Pezzi/Scatola Pieces/Box Stck/Karton Carreaux/Boîte	Mq/Scatola Sqmt/Box Qm/Karton M2/Boîte	Kg/Scatola Kgs/Box Kg/Karton Kg/Boîte	Scatole/Paletta Boxes/Pallet Karton/Pallet Boîte/Palette	Mq/Paletta Sqmt/Pallet Qm/Pallet M2 /Palette	Kg/Paletta Kgs/Pallet Kg/Pallet Kg/Palette	Formato Paletta Size Pallet Format Pallet Dim. Palette
45x90 Nat/Ret	P	9,5	3	1,215	26,0	36	43,74	936	120x90x60
60x60 Nat/Ret	P	9,5	4	1,44	29	32	46,08	928	120x80x75
60x60 Antislip/Ret	P	9,5	4	1,44	29	32	46,08	928	120x80x75
60x60 Lap/Ret	P	9,5	4	1,44	30	32	46,08	960	120x80x75
30x60 Nat/Ret	P	9,5	7	1,26	25,30	40	50,40	1012	120x80x75
30x60 Muretto	P	9,5	7	1,26	25,30	32	40,32	809,60	120x80x75
30x60 Mix	P	9,5	7	1,26	25,30	40	50,40	1012	120x80x75
30x60 Inciso	P	9,5	6	1,08	21,5	21	22,68	451,5	120x80x75
30x30 Mosaico (Su Rete)	P	9,5	5	0,45	8,5	60			
Pezzi Speciali / Special Pieces									
7x90 Battiscopa	P	9,5	8	0,504	13	48			
8x60 Battiscopa	P	9,5	10	0,48	11	72			
30x60 Step	P	9,5	6	1,08	21,5	36			

## Riepilogo Gamma

Collection  
Serie  
Gamme

Formati Sizes	Structure 3D 3D Structures	Pezzi Speciali Special Pieces												
		Battiscopa 7x90 2¾x36"	Battiscopa 8x60 3¼x24"	Step 30x60 12x24"										
45x90 18"x36"	60x60 24"x24"	30x60 12"x24"	± 9,5	± 9,5	± 9,5	± 9,5	± 9,5	± 9,5	± 9,5	± 9,5				
			DIN 51130	DIN 51097	DCOF	± 9,5	± 9,5	± 9,5	± 9,5	± 9,5				
Nat/Ret	03877	00126A	00136A	R10	A+B	> 0,42	00149A	00225A	00224A	00282	00159	00199	00179	00189
Lap/Ret		00131A		V3									00184	
Antislip/Ret		00456A		R11	A+B+C									
Nat/Ret	03704	00127A	00137A	R10	A+B	> 0,42	00150A	00225A		00283	00160	00200	00180	00190
Lap/Ret		00132A		V3									00185	
Antislip/Ret		00457A		R11	A+B+C									
Nat/Ret	03706	00128A	00138A	R10	A+B	> 0,42	00151A		00224A	00284	00161	00201	00181	00191
Lap/Ret		00133A		V3									00186	
Antislip/Ret		00458A		R11	A+B+C									
Nat/Ret	03707	00129A	00139A	R10	A+B	> 0,42	00152A	00225A			00162	00202	00182	00192
Lap/Ret		00134A		V3						00285			00187	
Antislip/Ret		00459A		R11	A+B+C									
Nat/Ret	03881	00130A	00141A	R10	A+B	> 0,42	00153A		00224A		00163	00203	00183	00193
Lap/Ret		00135A		V3						00286			00188	
Antislip/Ret		00460A		R11	A+B+C									

